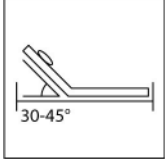


Placement



Orientation: Position opening towards patient's feet.



Bed Position: Raise the head of the bed 30-45° (if possible).

Usage



Patient Position: Rest buttocks on the seat of the bedderpan.



Fracture Pan Position: Ensure full insertion so that contents are collected in the fracture pan.

Removal



Removal: First, slide the fracture pan from between the patient's legs. Second, remove the bedderpan.



Reuse: Clean before using again; One patient intended per bedderpan. Recycle if no longer needed.

Questions/Concerns?

Email: info@emleorate.com

Website: emleorate.com/contact

Bedderpan™ Instructions

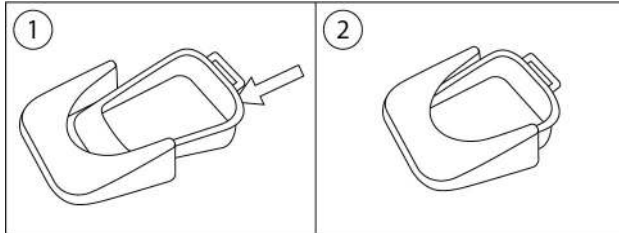


An Overview of Tips
and step-by-step guidance for use of your Bedderpan to reduce the chance of spillage and save time

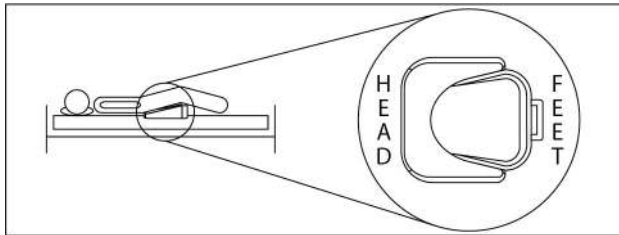
Step-by-Step Bedderpan Instructions

Placement

1. **Caregivers:** Slide a fracture bedpan into the Bedderpan.*



2. **Caregivers:** Place the Bedderpan with the fracture pan under the patient as you would with a typical bedpan, with the opening facing the patient's feet.

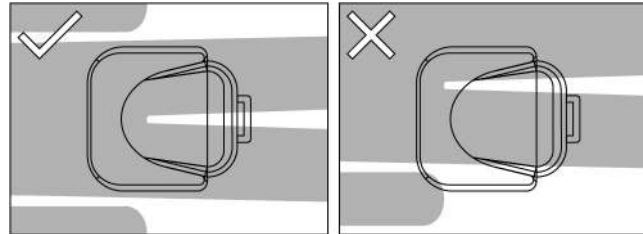


3. **Caregivers:** Raise the head of the bed (if possible) to a more comfortable position; a 30-45 degree angle is recommended.

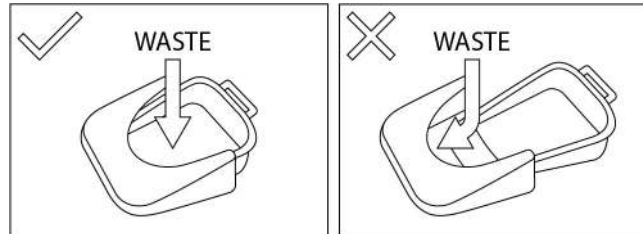
*One patient per Bedderpan

Usage

1. **Caregivers:** Adjust patient or Bedderpan to ensure the buttocks are centered on the seat.



2. **Patients/Caregivers:** Ensure the fracture pan is fully inserted into the Bedderpan during usage.



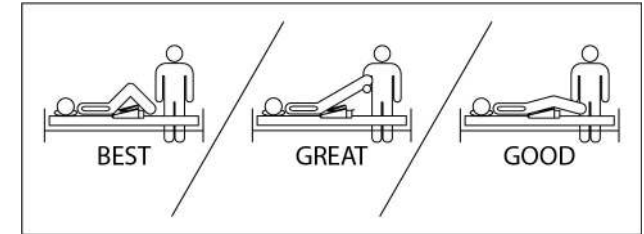
3. **Patients:** Go to the bathroom. Make any waste go through the top opening of the Bedderpan and into the fracture pan.
4. **Patients:** When finished or when the fracture pan is full, call over a caregiver for removal.

⚠ WARNING: DO NOT allow the patient to sit on the Bedderpan without a fracture pan for more than 1 minute as this may lead to discomfort and/or injury.

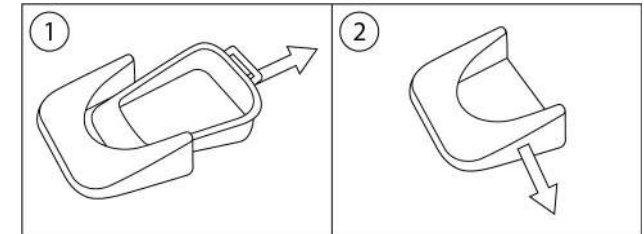
RECOMMENDATION: Do not allow the patient to sit on any bedpan for more than 10 minutes at a time as this may lead to discomfort and/or injury.

Removal

1. **Caregivers:** If possible, lower the head of the bed and bend/raise the patient's legs.



2. **Caregivers:** Slide the fracture pan out from the Bedderpan, to remove waste contents first.



3. **Caregivers:** Set the fracture pan aside, or empty right away. Optionally, empty, rinse off and then slide back into the Bedderpan, if needed, and return to Usage step #2.
4. **Caregivers:** If finished, remove the Bedderpan from the patient.
5. **Caregivers:** Rinse/clean the Bedderpan and fracture pan off for reuse, or recycle.

